



HOTELS AVAILABLE FOR BAYISM 2016

HOTEL ALEX***	2
HOTEL DELLE NAZIONI***	4
HOTEL MERIDIANA***	3
HOTEL MIRAGE****	5
NH ANGLO AMERICAN****	6
HOTEL BOSCOLO ASTORIA****	7
GRAND HOTEL BAGLIONI****	8
GRAND HOTEL CAVOUR****	9
NH PORTA ROSSA****	10

Click on the Image below for the map of the location of all the hotels available and of the conference venues



Piazza Piemonte, 2 – 20145 MILANO
Tel.: +39-02-43912468 / Fax: +39-02-48018575

congressi@promoest.com
traduzionimi@promoest.com

Via G.B. D'Albertis 12/9 – 16143 GENOVA
Tel.: +39-010-5702228 / Fax: +39-010-5702110

congressige@promoest.com
traduzioni@promoest.com

HOTEL ALEX***

Via Baccio Da Montelupo 18/20 - 50142 Firenze (FI)

In north Florence, Hotel Alex is a 10-minute tram or bus ride from the historic center. It features bright and colorful rooms with free Wi-Fi and a restaurant with porch for outdoor dining.

Each room at the Alex Hotel has a modern design and a different color scheme. They are all air-conditioned and feature an LCD TV and a private bathroom with hairdryer.

A continental breakfast is served daily. The restaurant serves Tuscan cuisine for lunch and dinner, and specialties include homemade cake and bread. The bar is open all day and has a furnished porch.

The hotel has a quiet location just a 10-minute drive from Florence Peretola Airport and Santa Maria Novella Train Station.

LOCATION

Hotel Alex is located in the Centre of the City, just 3 km away from **Santa Maria Novella Railway Station** and very close to Federiga Tram Stop, which leads to Historical Centre of Florence.

Hotel Alex is 6 km away from Amerigo Vespucci **Airport** and almost 80 km from Pisa Airport. A taxi ride from Amerigo Vespucci Airport costs € 20,00, alternatively there are several city bus which connect the airport with the city points of interest. From Pisa Airport are available several bus shuttle services.

By car, the nearest highway exit is Firenze-Scandicci, which is just 7 km away from Hotel Alex. To reach us from the highway follow the signs for city centre.

HOTEL RATES

SINGLE	N.A.	DUS	€ 80,00	DOUBLE	€ 90,00
OTHER					



HOTEL MERIDIANA***

Via Don Giovanni Minzoni, 25 50129 Florence

The Hotel Meridiana is a modern hotel in Florence. It has recently been restructured and is excellent for those travelling for leisure or business, and offers a perfect combination of comfort and convenience.

Being situated near the historic centre, everything is within easy reach: the Piazza della Libertà, the Fine Arts Academy, the Duomo (Cathedral), the Uffizi Gallery, the trade fair complex with the Florence Congress Centre and the Fortezza da Basso.

The Hotel offers a pleasant environment, with relaxing colours, modern furniture and friendly service which, together with the excellent quality-price ratio, make the Hotel Meridiana the perfect place to stay in Florence, whether for pleasure or business. An attractive restaurant with Tuscan and Italian cuisine is also available.

The Hotel Meridiana belongs to the Panorama group of independently owned hotels. The group was founded in Florence in 1990 with the intention of creating a "panorama" of different options to answer the needs of all types of guest who wish to stay in a prestigious hotel in Florence for either pleasure or business.

LOCATION

BY CAR - Exit the highway and follow the signs for the city centre, then for Santa Maria Novella Railways Station. As you get there, look for Piazza della Libertà (about 2km from The Railway Station). Keeping to the right side of Piazza della Libertà, turn off into "Viale Don Minzoni" (where there is a sign for Fiesole – Stadio). After 100 metres, you will see the Hotel Meridiana on your left.

BY TRAIN - Take bus no. 1 A/B (in the direction of Lapo/Boccaccio) or no. 7 (in the direction of Fiesole) and get off at the Piazza Libertà bus stop. After 100 metres, you will see the Hotel Meridiana on your left.

HOTEL RATES

SINGLE	N.A.	DUS	€ 115,00	DOUBLE	N.A.
OTHER					



HOTEL DELLE NAZIONI***

Via Luigi Alamanni, 15 - 50123 Florence - Italy

In the heart of downtown Florence, just to the east of the central train station - Santa Maria Novella - you will find the Hotel Delle Nazioni. It is ideally situated, providing excellent access to the main tourist attractions like the Duomo, as well as the shopping districts, conference centre and exhibition halls.

In 2004 the hotel undertook a complete overhaul and renovation, which made it one of the most modern hotels in Florence and one of the few to offer round the clock 24 hour wi-fi internet and 6 pcs in the hotel lobby.

The needs of the modern traveller were taken into account with free browsing offered in our Internet Lounge, and music available on our MP3 Music Totem facility.

We also boast a fully functioning Wi-Fi lounge and bar area.

Each room comes fully equipped with satellite television, safety deposit box and hairdryer as standard, and many have the luxury of a view of the Duomo itself! We also offer excellent interactive IT facilities to meet the needs and comforts of both the modern business traveller, as well as the traditional culture-seeking tourist

LOCATION

If you arrive **by train** we are less than one hundred meters from the central train station Santa Maria Novella and around two kilometres from the other stations, Firenze Campo di Marte and Firenze Rifredi. Simply exit the central station to the right, cross the road and walk for about fifty metres until you reach number 15, and you have found us.

The nearest airport is Florence FLR, situated approximately five kilometres from the town centre, and there is also Pisa airport, roughly 85km from Florence. From Florence FLR there is a SITA bus that runs every thirty minutes direct to Santa Maria Novella train station. Alternatively there are plenty of taxis. From Pisa, there are several regional and national trains that will bring you direct to **Florence**.

If you are arriving by car, take the A1 from the North (Milan) or South (Rome or Naples), and simply take the exit for Firenze Nord. Alternatively from Pisa take the A11 from Pisa Nord, again exiting at Firenze Nord. Once off the motorway, follow signs for Centro-Porta al Prato, and when you reach us take advantage of our underground car park.

HOTEL RATES

SINGLE	N.A.	DUS	€ 124,00	DOUBLE	€ 134,00
OTHER					



Piazza Piemonte, 2 – 20145 MILANO
Tel.: +39-02-43912468 / Fax: +39-02-48018575

Via G.B. D'Albertis 12/9 – 16143 GENOVA
Tel.: +39-010-5702228 / Fax: +39-010-5702110

congressi@promoest.com
traduzionimi@promoest.com

congressige@promoest.com
traduzioni@promoest.com

HOTEL MIRAGE****

Via Baracca, 231/18 - 50127 FIRENZE

Just over 1.6km from Florence Peretola Airport, the Hotel Mirage is a 10-minute drive from the center of Florence. It provides free guarded parking. The Firenze Nord exit of the A1 Highway is 8km away. Wi-Fi is free.

The classic-style rooms have carpeted floors and wood furniture. Each features a satellite TV, air conditioning and a bathroom with a shower. Some rooms include extra space, larger beds and a balcony.

The restaurant specializes in Italian classics and Tuscan specialties, made from fresh local products. Breakfast is buffet-style, and drinks are available at the bar, with the ambient sound of piano music.

At Hotel Mirage, attentive, professional staff is always on hand to suggest places to visit and help with useful travel info.

LOCATION

Out of the **airport** you have to cross the street, then merge on the right getting the Viadotto Indiano (bridge)

Take the first exit available on the right

At the intersection light make right and go straight for 400 meters: You will find the hotel on your right

From Santa Maria Novella train station you can take a Taxi or Buses. Buses no. 29, 30 and 35 will take you to Via Francesco Baracca. The hotel is located at number 231/18.

By car exit the highway at North Florence, A1/A11 Exit "Firenze Nord".

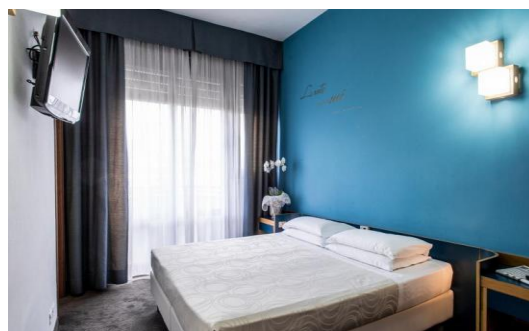
Since the end of the main road leading into the city center, after the exit (1.5 miles), follow signs for: "Viadotto dell'Indiano".

Take the first exit on the right, following signs for Via Baracca.

The second light on the right you will find our brand logo.

HOTEL RATES

SINGLE	N.A.	DUS	€ 139,00	DOUBLE	€ 149,00
OTHER					



Piazza Piemonte, 2 – 20145 MILANO
Tel.: +39-02-43912468 / Fax: +39-02-48018575

Via G.B. D'Albertis 12/9 – 16143 GENOVA
Tel.: +39-010-5702228 / Fax: +39-010-5702110

congressi@promoest.com
traduzionimi@promoest.com

congressige@promoest.com
traduzioni@promoest.com

NH ANGLO AMERICAN****

Via Garibaldi 9 – 50123 FIRENZE

The NH Firenze Anglo American hotel resides in a peaceful spot between the Porta al Prato and Borgo Ognissanti areas of Florence. It's close to public transport, although the city's sights are only a short stroll away via a riverside walk.

The hotel's 115 rooms have a refined air about them, and are all dressed out in a muted color scheme and hardwood flooring. There are 5 different room types available, from Standard to Suite.

The hotel – a former convent – retains an old-world charm, with antique furniture and old Florentine paintings dotted around the place. The restaurant and bar make elegant rest spots, and there's a lovely patio for the summer months.

LOCATION

Airport

From Amerigo Vespucci Airport:
The hotel is situated just six kilometers from the airport. Buses are available or you can take a taxi.
FROM THE TRAIN STATION

Train

NH Anglo American is located approximately 800 meters from Santa Maria Novella train station. You can catch a bus, tram or taxi.

Car

Exit the highway and follow the signs for City Centre /Firenze Santa Maria Novella Railway Station.



HOTEL RATES

SINGLE	N.A.	DUS	€ 150,00	DOUBLE	€ 165,00
OTHER					

Piazza Piemonte, 2 – 20145 MILANO
Tel.: +39-02-43912468 / Fax: +39-02-48018575

Via G.B. D'Albertis 12/9 – 16143 GENOVA
Tel.: +39-010-5702228 / Fax: +39-010-5702110

congressi@promoest.com
traduzionimi@promoest.com

congressige@promoest.com
traduzioni@promoest.com

HOTEL BOSCOLO ASTORIA****

Via Del Giglio 9 – 50123 FIRENZE

In choosing Florence, you've chosen to immerse yourself completely in the art and beauty of the Italian Renaissance. That's why the Hotel B4 Astoria Firenze is the ideal choice for your stay. You'll be accommodated in the rooms of the Palazzo Gaddi and Palazzo Arrighetti, historic buildings belonging to noble Florentine families, where art recounts the passage of centuries every step of the way, from the lobby to your room. Indeed, it was while living at Palazzo Gaddi that the great English author John Milton found inspiration for his masterpiece, Paradise Lost, and in these very rooms that he wrote it.

The nobility of the luxury Hotel B4 Astoria Firenze is also reflected in its location: the church of Santa Maria Novella, abounding in great art, is right nearby (as is the convenient railway station of the same name), and a short stroll will take you directly to Florence's historic centre. An undeniable advantage that puts the most beautiful areas of the city right at your fingertips.

The prestigious conference rooms of the luxury Hotel B4 Astoria Firenze, decorated in the Florentine Baroque style, are the perfect backdrop for important events.

LOCATION

The hotel is located in the city centre, a few steps from the Duomo, the Santa Maria Novella train station, the Medici Chapels and San Lorenzo Market, 10 minutes walk to Ponte Vecchio, the Uffizi Gallery and the Accademy of Fine Arts.

By CAR - From the south, take the Firenze Certosa exit, then follow the signs for the Stazione Centrale. From the north, take the Firenze Nord exit and then follow the signs for the Stazione Centrale.

From the Santa Maria Novella Station

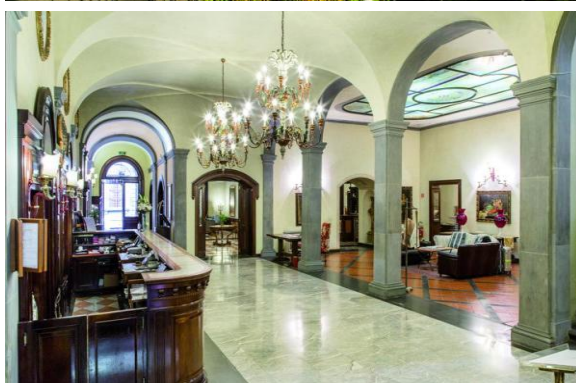
The station is approximately 500 m away. The Santa Maria Novella station is 300 m from the Astoria. By taxi approximately 5 minutes, or by foot take Via Panzani and then turn left on the first street.

The Amerigo Vespucci Airport is approximately 8 km away. By taxi it takes around 15 minutes.

By Shuttle to the Station. It is also possible to organize transportation by private car, by contacting the Hotel reception.

HOTEL RATES

SINGLE	N.A.	DUS	€ 198,00	DOUBLE	€ 184,00
OTHER					



Piazza Piemonte, 2 – 20145 MILANO
Tel.: +39-02-43912468 / Fax: +39-02-48018575

Via G.B. D'Albertis 12/9 – 16143 GENOVA
Tel.: +39-010-5702228 / Fax: +39-010-5702110

congressi@promoest.com
traduzionimi@promoest.com

congressige@promoest.com
traduzioni@promoest.com



GRAND HOTEL BAGLIONI****

Piazza Unità Italiana 6, Firenze Italia

The hotel is a symbol of Florentine hospitality, has always been a protagonist of historical and society events, and has welcomed visitors from all over the world since 1903. It is located in the heart of **Florence**, a short walk from the **Palazzo dei Congressi** congress centre, the exhibition centre and the most important tourist attractions.

The 193 recently renovated and decorated **rooms** are **comfortable** and **elegant**. The nine **congress rooms** – thanks to their refinement and versatility – are ideal for every type of event. The **restaurant**, and in summer the magnificent roof garden, have splendid views over the city of **Florence** views which constantly change throughout the day.

Located in the heart of Florence, the hotel is just a few hundred metres from the cathedral and from the Congress Centre, the city's main shopping streets, monuments and museums. The airport is just 15 minutes away by taxi and the central railway station is 200 metres away.

By car

Exit the highway and follow the indications for Santa Maria Novella Railway Station. As you get there, look for Piazza Unità d'Italia which is just 200m away: Grand Hotel Baglioni is right there.

By train

The Grand Hotel Baglioni is in Piazza dell'Unità d'Italia which is about 200 metres from the central Santa Maria Novella railway station. You can also get to the hotel by taking the underpass from inside the station to the square.

By plane

Florence's Amerigo Vespucci airport is about five kilometres away. It is easy to reach the hotel with the shuttle bus which stops at the Sant Maria Novella central railway station (200 metres away), or with taxi or with a transfer arranged by our concierge. It takes about 20/30 minutes to get to the hotel from the airport. If you are arriving at Pisa or Bologna airports we advise taking the train to Florence's central Santa Maria Novella station or a transfer organised by our concierge.



HOTEL RATES

SINGLE	N.A.	DUS	€ 242,00	DOUBLE	€ 272,00
OTHER					

Piazza Piemonte, 2 – 20145 MILANO
Tel.: +39-02-43912468 / Fax: +39-02-48018575

Via G.B. D'Albertis 12/9 – 16143 GENOVA
Tel.: +39-010-5702228 / Fax: +39-010-5702110

congressi@promoest.com
traduzionimi@promoest.com

congressige@promoest.com
traduzioni@promoest.com

GRAND HOTEL CAVOUR****

Via Del Proconsolo 3 – 50122 Firenze

Grand Hotel Cavour is in your dream location! The building itself dates back to 1280, and in its current state is a comfortable hotel where you'll find excellent hospitality and services. It is situated in the heart of Florence in front of the magnificent Bargello Palace, near the Piazza della Signoria and the Duomo.

Grand Hotel Cavour has a rooftop terrace with views of Florence Cathedral. It showcases a grand entrance hall with free Wi-Fi, marble floors and statues, and elegant rooms with air conditioning.

The Uffizi Gallery and the Ponte Vecchio are both less than half a kilometer from the Grand Hotel Cavour. The Cathedral of Santa Maria del Fiore is just a few meters away.

The restaurant serves classic Italian cuisine and regional specialties, made using local ingredients. Cocktails are available at the bar, open until midnight. The Eva mini spa includes a fitness center and a Turkish bath.

LOCATION

By Car

Exit the highway and follow the signs for City Centre /Firenze Santa Maria Novella Railway Station.

BY TRAIN

EUROSTAR from Roma 1 h. 15 - FIRENZE SANTA MARIA NOVELLA STATION
EUROSTAR from Milano 2 h. - FIRENZE SANTA MARIA NOVELLA STATION
BY AIRPLANE Amerigo Vespucci Airport - Firenze - 07 Kms.
Galileo Galilei Airport - Pisa - 70 Kms.

HOTEL RATES

SINGLE	N.A.	DUS	€ 250,00	DOUBLE	€ 270,00
OTHER	TRIPLE ROOM € 310,00				



Piazza Piemonte, 2 – 20145 MILANO
Tel.: +39-02-43912468 / Fax: +39-02-48018575

Via G.B. D'Albertis 12/9 – 16143 GENOVA
Tel.: +39-010-5702228 / Fax: +39-010-5702110

congressi@promoest.com
traduzionimi@promoest.com

congressige@promoest.com
traduzioni@promoest.com

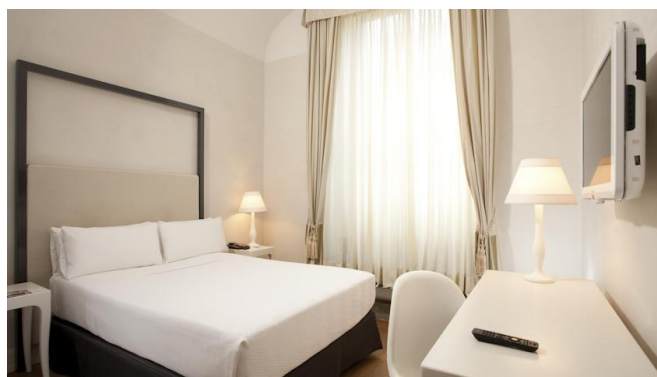
NH PORTA ROSSA****

Via Porta Rossa 19 – 50123 FIRENZE

The NH Collection Firenze Porta Rossa is thought to be the oldest hotel in Italy, complete with a 13th-century tower and ancient frescoes. It has an outstanding location in the center of Florence, just a few minutes' walk from the famous Duomo and Uffizi Gallery.

The hotel's 72 rooms are the epitome of sophistication, fusing old-world charm with modern furnishings in ivory cream and brilliant red.

The hotel is filled with antique furniture, and the lobby has a beautiful stained glass ceiling. Meanwhile, frescoes are a feature of the sleek bar.



LOCATION

Airport

From Amerigo Vespucci airport you can catch a bus (the shuttle service, additional fee, is called Volainbus and it's powered by Ataf) or take a taxi, or rent a car.

Train

From the main exit of Santa Maria Novella cross Piazza della Stazione and follow Via delle Belle Donne as far as you cross Via de' Tomabuoni. Go straight as far as you cross Via Porta Rossa. You can also catch bus number 6 at Piazza della Stazione and get off at the Via de' Vecchietti bus stop and walk up to Via Porta Rossa (approximately 4 min).

Car

Exit the highway and follow the signs for City Centre /Firenze Santa Maria Novella Railway Station.

SINGLE	N.A.	DUS	€ 287,00	DOUBLE	€ 302,00
OTHER					

Piazza Piemonte, 2 – 20145 MILANO
Tel.: +39-02-43912468 / Fax: +39-02-48018575

Via G.B. D'Albertis 12/9 – 16143 GENOVA
Tel.: +39-010-5702228 / Fax: +39-010-5702110

congressi@promoest.com
traduzionimi@promoest.com

congressige@promoest.com
traduzioni@promoest.com

